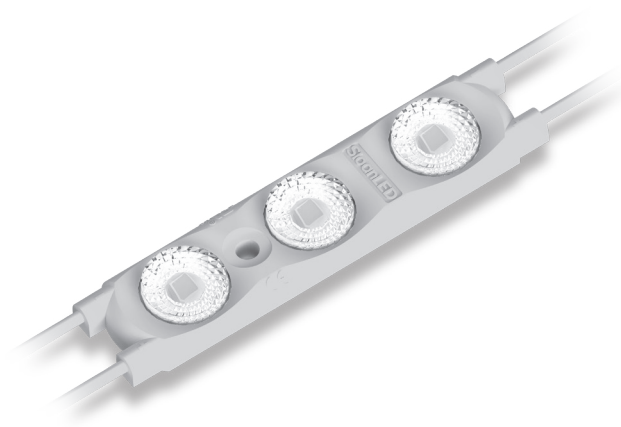


SloanLED Prism¹²

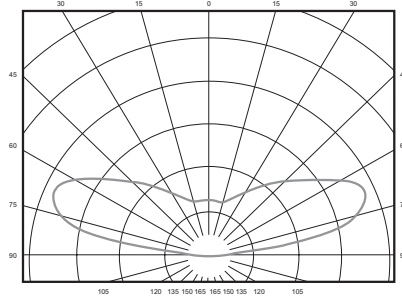
Premium 12V LED
channel letter lighting solution

Specifications

- Dimensions L x W x H** 77.4 mm x 17.8 mm x 9.5 mm
- LEDs per module** 3
- Operating temperature** -40° C to +70° C
- Optional dimming** PWM (Pulse width modulation, SloanLED Universal LED Wireless Dimmer 601115)
- Binning** MacAdam Ellipse 3-Step (whites)
- Protection class** IP66 & IP68*
- Life rating** >60,000 hours†
- Fastening** Peel-n-stick and mechanical



Luminous Intensity Distribution



* Prism¹² IP68 test parameters are 1.3 m submersion for 30 minutes. Do not mount in submerged application or where module will be directly exposed to prolonged flowing or dripping water.
† Configured for Class 2 Output.
‡ Based on LM-80 data for white LEDs. LM-80 data unavailable for color LEDs.

Whites

Modules per m	Color temperature	Part number	Optimal can depth	Power per module	Lumens per module (nominal)	Efficacy	Packaging
4.9	7100 K [‡]	701269-7W12SJ1-MB	75-200 mm	0.92 W	124	135 lm/W	11.8 m (58 modules) per bag, 5 bags per carton
	6500 K	701269-6W12SJ1-MB					
	5000 K [‡]	701269-5W12SJ1-MB					
	4000 K [‡]	701269-4W12SJ1-MB					
	3000 K	701269-3W12SJ1-MB					

§ Availability limited: Call to confirm.

Colors

Modules per m	Color	Nominal wavelength	Part number	Optimal can depth	Power per module	Lumens per module (nominal)	Efficacy	Packaging	
4.9	Red	628 nm	701269-RD12SJ1-MB	75-200 mm	0.72 W	24	33 lm/W	15.2 m (75 modules) per bag, 4 bags per carton	
	Orange	606 nm	701269-OR12SJ1-MB		0.52 W		46 lm/W	21.1 m (104 modules) per bag, 3 bags per carton	
	Green [‡]	527 nm	701269-GR12SJ1-MB		0.72 W		59	82 lm/W	15.2 m (75 modules) per bag, 4 bags per carton
	Blue	471 nm	701269-BL12SJ1-MB				18	25 lm/W	

§ Availability limited: Call to confirm.

Power Supply Capacity

12 VDC Power supply†	SloanLED Prism ¹²		
	White (7100 K, 6500 K, 5000 K, 4000 K, 3000 K)	Red, Green, Blue	Orange
25 W Power supply (EU/ROW ONLY)	4.9 m / 24 mods	6.3 m / 31 mods	8.7 m / 43 mods
30 W Power supply (EU/ROW ONLY)	5.9 m / 29 mods	7.5 m / 37 mods	10.6 m / 52 mods
60 W Power supply	11.8 m / 58 mods	15.2 m / 75 mods	21.1 m / 104 mods
2 x 60 W Power supply	2 x 11.8 m / 58 mods	2 x 15.2 m / 75 mods	2 x 21.1 m / 104 mods
2 x 75 W Power supply (EU/ROW ONLY)	2 x 14.6 m / 72 mods	2 x 62.7 m / 94 mods	2 x 26.4 m / 130 mods

SloanLED Prism¹²

Premium 12V LED

channel letter lighting solution

Density Guidelines

Module color	Can Depth	Modules per meter	Milimeters on center standard face	Milimeters on center dark vinyl	Milimeters on center perforated vinyl	Watts per module	Modules per M ² standard face	Modules per M ² dark vinyl
White (7100 K, 6500 K, 5000 K, 4000 K, 3000 K)	75 mm	4.9	250	225	200	0.92	19.6	21.8
	100 mm		300	275	250		16.3	17.8
	125 mm		425	400	375		11.5	12.3
Red	50 mm	10	125	100	75	0.72	80.0	100.0
	75 mm	4.9	225	200	175		21.8	24.5
	100 mm		325	300	275		15.1	16.3
	125 mm		375	350	325		13.1	14.0
Orange	75 mm	4.9	175	150	125	0.52	28.0	32.7
	100 mm		275	250	225		17.8	19.6
	125 mm		325	300	275		15.1	16.3
Green	75 mm	6.5	275	250	225	0.72	23.6	26.0
	100 mm	4.9	325	300	275		15.1	16.3
	125 mm		350	325	300		14.0	15.1
Blue	75 mm	4.9	250	225	200	0.72	19.6	21.8
	100 mm		325	300	275		15.1	16.3
	125 mm		375	350	325		13.1	14.0

Notes:

- 1) Test results based on Evonik WN070 3 mm acrylic, 30% translucency.
- 2) It is recommended that you first test LED density in sample letter/cabinet to evaluate brightness, uniformity and color.
- 3) Should you have questions or require assistance in testing, please contact your SloanLED customer service representative.
- 4) > Symbol represents greater than. < Symbol represents less than. ≥ Symbol represents greater than or equal to.
- 5) For multiple rows, calculate half of the row spacing given from the table and start first row offset that distance from return.
- 6) Products can be used in can depths deeper or shallower than listed above, but testing is recommended.
- 7) Maximum single row coverage is (Millimeters on center with standard face) × 1.25.

These guidelines are intended to provide only an approximation of product required for your sign, assuming an optimal balance of performance and cost. SloanLED is not responsible for the actual results based on the use of these guidelines.

SloanLED Headquarters

5725 Olivas Park Drive, Ventura, CA, USA
805.676.3200 • info@SloanLED.com

SloanLED Europe b.v.

Argonstraat 110, 2718 SN Zoetermeer, NL
+31 88 12 44 900 • europe@SloanLED.com



SloanLED.com

© 2022 SloanLED Rev C 2022-08-22



Visit product page for details.

Specifications subject to change without notice.

