

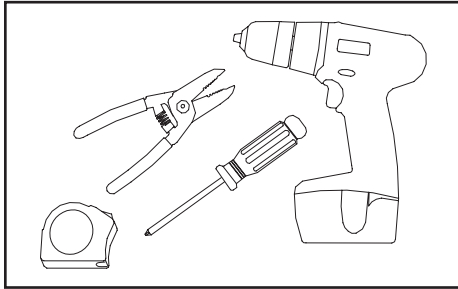
SloanLED Prism²⁴

Installation Guide for 701269-(XX)24(Y)J(Z)-MB

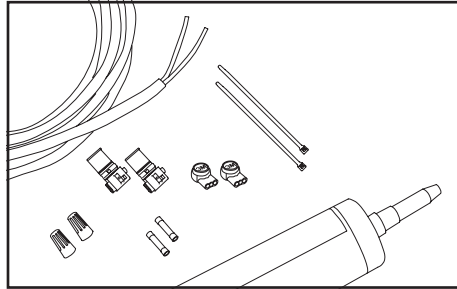
WARNING: Risk of electrical shock. New installation and LED Retrofit Kit installation requires knowledge of sign electrical systems. If not qualified, do not attempt installation. Contact a qualified electrician. Follow all NEC and local codes. SloanLED Prism²⁴ is not suitable for submersion or direct exposure to water for extended periods of time. **AVERTISSEMENT:** Risque de choc électrique. La nouvelle installation et l'installation du kit de modification à LED nécessitent la connaissance des systèmes électriques de signalisation. Si non qualifié, ne tentez pas l'installation. Contactez un électricien qualifié. Suivez tous les codes NEC et locaux. SloanLED Prism²⁴ ne convient pas à la submersion ni à l'exposition directe à l'eau pendant de longues périodes.

For New Installation, proceed with Step 1 below. For Retrofit Installations, begin with Retrofit Instructions on page 2.

New Installation

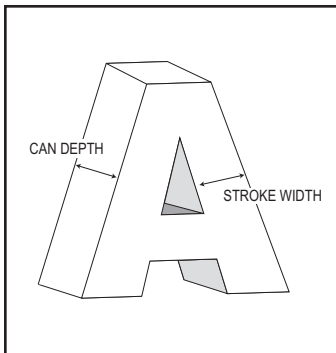


1. **Tools required:** Measuring tape, wire strippers. **Optional:** Drill, screwdriver.

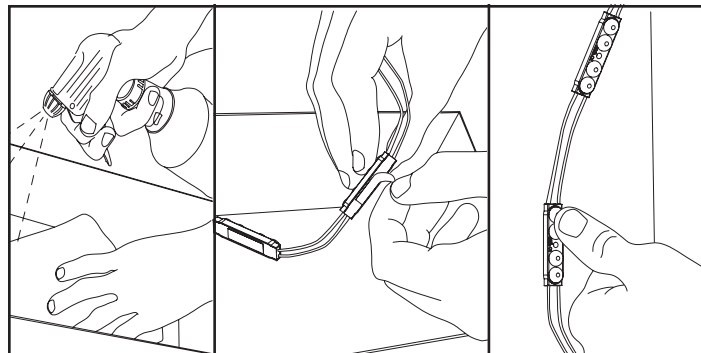


2. Components list:

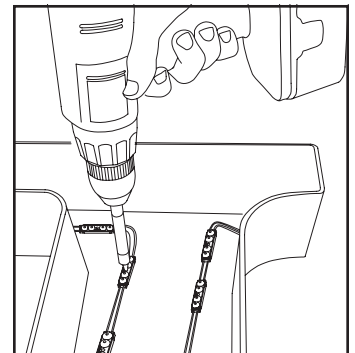
- SloanLED Prism²⁴ modules, model numbers 701269-(XX)24(Y)J(Z)-MB
- SloanLED 24 V Class 2 output power supply (refer to "SloanLED Power Supply Guide for Sign Products" for appropriate 24 V power supply models)
- UL approved 18 AWG or larger diameter supply wire
- UL approved wire connectors appropriate for wire gauge used
- Optional for mounting: Electrical grade silicone, #6 (M3) sheet metal screws, or 1/8" (3 mm) aluminum rivets



3. **Layout:** To populate sign, refer to SloanLED[®] Prism²⁴ density guidelines as well as power supply loading chart below to determine appropriate number of modules and power supplies.



4. **Peel and stick:** Clean inside sign with rubbing alcohol and allow to dry. Using predetermined layout and LED placement from Step 3, remove tape backing and stick modules into place. Ensure modules are firmly attached. Other means of securing strip (sealant, vinyl, etc.) are also acceptable.

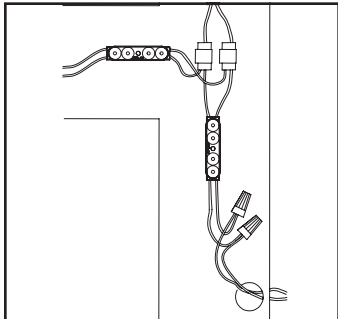


5. **Fasteners:** Use fasteners or silicone as necessary to fix modules in place. Refer to components list above for acceptable fasteners.

SloanLED Prism²⁴

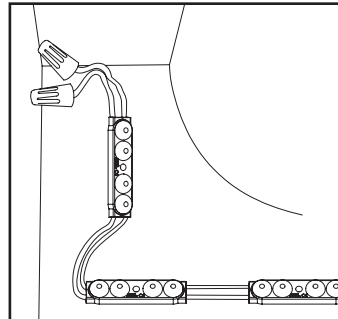
Installation Guide for 701269-(XX)24(Y)J(Z)-MB

WARNING: Connect Red striped wire of LED modules (+) to Red wire of power supply (+). Connect White wire of LED modules (-) to Black wire of power supply (-). Reverse polarity connections may damage LEDs and will void product warranty. **AVERTISSEMENT:** Connectez le fil rouge des modules LED (+) au fil rouge de l'alimentation (+). Connectez le fil blanc des modules LED (-) au fil noir de l'alimentation (-). Des connexions inversées peuvent endommager les DEL et annuler la garantie du produit.

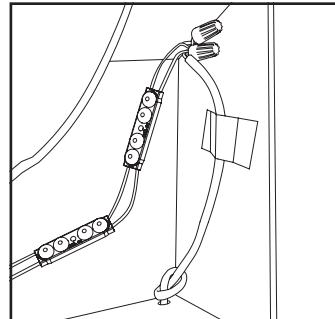


6. **Connections:** Modules may be connected in series* or parallel.

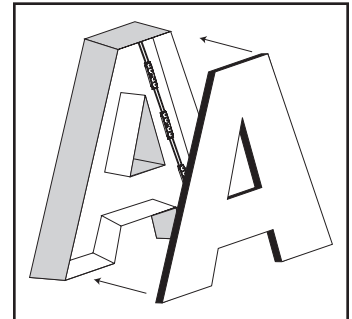
* For optimal performance, SloanLED recommends connecting no more than 40 ft (12.2 m) in series.



7. **Cap all unused wires:** Using appropriate UL Listed wire connectors (refer to components list on page 1), cap all used wires. Strand of modules should not be looped to create a close circuit.



8. **Connect power supply to first module on string:** See power supply install guide for more information regarding power supply installation.



9. **Replace sign face:** Clean any debris from inside of sign and replace the sign face.

Retrofit Instructions for Existing Signs



GENERAL PURPOSE
RETROFIT SIGN CONVERSION.
FOR USE ONLY IN ACCORDANCE
WITH KIT INSTRUCTIONS.

KIT IS COMPLETE ONLY WHEN ALL PARTS
REQUIRED BY THE INSTRUCTIONS ARE PRESENT.

WARNING: Risk of fire or electric shock. Install this kit only in host signs that have been identified in the installation instructions, and where the input rating of the retrofit kit does not exceed the input rating of the sign. Installation of this LED retrofit kit may involve drilling or punching of holes into the structure of the sign. Check for enclosed wiring and components to avoid damage to wiring and electrical parts. **AVERTISSEMENT:** Risque d'incendie ou de choc électrique. Installez ce kit uniquement sur les panneaux hôtes identifiés dans les instructions d'installation et dans lesquels les caractéristiques nominales d'entrée du kit de modification ne dépassent pas celles du panneau. L'installation de ce kit d'amélioration des LED peut impliquer de percer ou de percer des trous dans la structure de l'enseigne. Vérifiez le câblage et les composants inclus pour éviter d'endommager le câblage et les pièces électriques.

1. Identify sign to be retrofit and ensure branch circuit supplying existing sign are within voltage range for LED power supply. Refer to components list (page 1) and "24 VDC Power Supply Capacity Chart" (page 3).
2. Remove existing lighting equipment intended to be replaced, such as neon or fluorescent, and all power supplies, transformers, or ballasts. Remove existing neon and all standoffs to leave an empty channel letter can. **NOTE:** All materials removed must be disposed of in accordance with applicable local, state, and federal laws.
3. If required by local, state, or national electrical code, install a new disconnect switch.
4. Determine suitability and structural integrity of existing sign after removal of existing lighting equipment. If retrofit does not require the making of any new holes, do not make or alter any open holes in an enclosure of wiring or electrical components during kit installation. If existing holes are present in a wet or outdoor location sign, repair and seal any unused openings in the electrical enclosure. Openings greater than 0.5" (12.7 mm) diameter require a metal patch secured by screws or rivets and caulked with non-hardening caulk. Smaller openings may be sealed with non-hardening caulk.
5. Clean inside of sign using non-oil based cleaner. Follow all manufacturer's instructions and ensure inside of sign is dry before proceeding with installation. This is an important step for good adhesion of SloanLED channel letter module mounting tape.
6. To populate sign, refer to SloanLED Prism²⁴ density guidelines as well as power supply capacity chart (page 3) to determine appropriate number of modules and power supplies. A list of acceptable power supply models is shown in the supplemental "**SloanLED Power Supply Guide for Sign Products**".
7. Follow all instructions on pages 1 and 2 under "New Installation" to properly install LED modules.
8. Connect modules to power supply output as shown on page 2 under "New Installation".
9. Connect power supply input as outlined in power supply installation guide in accordance with local, state and national electrical codes by qualified personnel. Refer to power supply install guide included with power supply for details.
10. If required, install disconnect switch in accordance with local, state and national electrical codes by qualified personnel.

SloanLED Prism²⁴

Installation Guide for 701269-(XX)24(Y)J(Z)-MB

24 VDC Power Supply Capacity Chart

Power output	Maximum feet (meters) / modules									
	SloanLED Prism ²⁴				SloanLED Prism ²⁴ LP	SloanLED Prism ²⁴ High Output	SloanLED Prism ²⁴ Mini			
	White 7100 K, 6500 K, 5000 K, 4000 K, 3000 K (1.2/ft, 3.9/m)	Red (1.5/ft, 4.9/m)	Green (1.5/ft, 4.9/m)	Blue (1.5/ft, 4.9/m)	White 7100 K, 6500 K, 5000 K, 4000 K, 3000 K (1.5/ft, 4.9/m)	White 6500 K, 5000 K (0.8/ft, 2.6/m)	White 7100 K, 6500 K, 5000 K, 4000 K, 3000 K (2.5/ft, 8.2/m)	Red, Green (2.5/ft, 8.2/m)	Blue (2.5/ft, 8.2/m)	
30 W (EU/ROW ONLY)	25.8 (7.9) / 31 mods	41.3 (12.6) / 62 mods	33.3 (10.2) / 50 mods	30.0 (9.1) / 45 mods	41.3 (12.6) / 62 mods	27.5 (8.4) / 22 mods	26.8 (8.2) / 67 mods	40.8 (12.4) / 102 mods	23.6 (7.2) / 59 mods	
60 W	51.7 (15.8) / 62 mods	83.4 (25.4) / 125 mods	66.6 (20.3) / 100 mods	60.6 (18.5) / 91 mods	83.4 (25.4) / 125 mods	56.3 (17.2) / 45 mods	54.0 (16.5) / 135 mods	81.6 (24.9) / 204 mods	46.8 (14.3) / 117 mods	
96 W	86.7 (26.4) / 104 mods	138.7 (42.3) / 208 mods	111.3 (33.9) / 167 mods	101.3 (30.9) / 152 mods	138.7 (42.3) / 208 mods	93.8 (28.6) / 75 mods	90.0 (27.4) / 225 mods	136.0 (41.5) / 340 mods	78.4 (23.9) / 196 mods	
3 × 96 W	3 × 86.7 (26.4) / 104 mods	3 × 138.7 (42.3) / 208 mods	3 × 111.3 (33.9) / 167 mods	3 × 101.3 (30.9) / 152 mods	3 × 138.7 (42.3) / 208 mods	3 × 93.8 (28.6) / 75 mods	3 × 90.0 (27.4) / 225 mods	3 × 136.0 (41.5) / 340 mods	3 × 78.4 (23.9) / 196 mods	
100 W	86.7 (26.4) / 104 mods	138.7 (42.3) / 208 mods	111.3 (33.9) / 167 mods	101.3 (30.9) / 152 mods	138.7 (42.3) / 208 mods	93.8 (28.6) / 75 mods	90.0 (27.4) / 225 mods	136.0 (41.5) / 340 mods	78.4 (23.9) / 196 mods	
150 W (EU/ROW ONLY)	130.1 (39.6) / 156 mods	208.1 (63.4) / 312 mods	166.6 (50.8) / 250 mods	152.0 (46.3) / 228 mods	208.1 (63.4) / 312 mods	140.1 (42.7) / 112 mods	134.8 (41.1) / 337 mods	204.0 (62.2) / 510 mods	117.6 (35.8) / 294 mods	
Power used per ft (m) in watts	1.03 W (3.39)	0.65 W (2.13)	0.81 W (2.66)	0.89 W (2.90)	0.65 W (2.13)	0.96 W (3.15)	1.00 W (3.28)	0.65 W (2.13)	1.15 W (3.77)	

Capacities based on 90% of power supply output.

NOTE: Refer to "SloanLED Power Supply Guide for Sign Products" for appropriate 24 V power supply models.

Extension of Power Supply Leads

If longer lead wire from power supply to LED modules is needed, an extension can be used. Extension should be kept as short as possible, i.e., under 15 ft for 18 AWG UL Listed PLTC (4.6 m for 1 mm² PLTC) or under 50 ft for 14 AWG UL Listed PLTC (15.2 m for 2.5 mm² PLTC).

Troubleshooting

NOTE: A licensed electrician should perform all applicable steps.

Entire sign or leg does not light after complete installation	Check connection from power supply lead to first module. Make sure polarity of connections made at the power supply lead and any jumper wire is correct. Power supply outputs should be connected RED-TO-RED and BLACK-TO-WHITE.
Still does not light	Check output voltage of power supply using a voltmeter. The output voltage should be DC 24.0 V ± 0.5 V. If there is no output voltage, have a licensed electrician check input voltage. Make sure power supply is connected correctly and getting primary power. If power supply is connected properly and getting primary power and there is still no output voltage, try a different power supply.
Still does not light	If power supply is getting primary power and the modules don't light, there may be a short in the secondary wiring. Check all connections and cap all loose wires.
The beginning of a leg lights, but the entire leg does not light or lights intermittently	The primary cause of a portion of a SloanLED Prism ²⁴ leg not lighting or lighting intermittently is a bad connection or reverse polarity connection between the modules that light and the modules that don't light. Check this connection.
One module does not light, but all others in the leg light	SloanLED Prism ²⁴ is designed so if one module fails, it will not cause the entire sign or leg to go out. If one module does not light, but all others in the leg do, replace this module with a new one.

SloanLED Prism²⁴ is covered by US patent 6,932,495 and US and foreign patents pending.

Scan QR code to download SloanLED Power Supply Guide for Sign Products



<https://sloanled.com/PowerSupplyGuideForSignProducts>



Customer service and technical support

SloanLED Headquarters

5725 Olivas Park Drive, Ventura, CA, USA
888.747.4LED (888.747.4533) • info@SloanLED.com

SloanLED.com

SloanLED Europe b.v.

Argonstraat 110, 2718 SN Zoetermeer, NL
+31 88 12 44 900 • Europe@SloanLED.com

