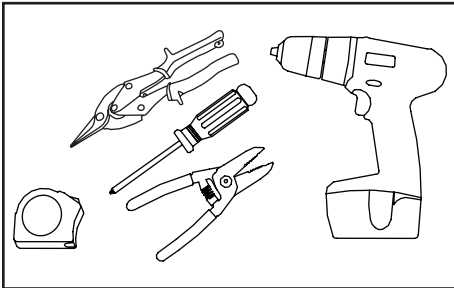


# SloanLED BrightLINE 2

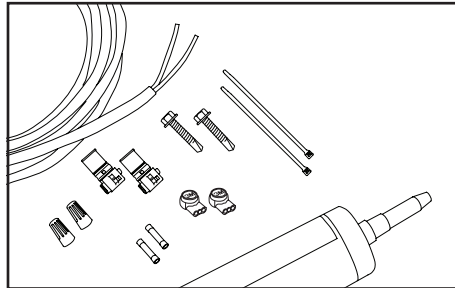
Installation Guide for 701989-(X)W24LB(1,2), 701989-(X)W24SB(1,2)

**WARNING:** Risk of electrical shock. Installation requires knowledge of sign electrical systems. If not qualified, do not attempt installation. Contact a qualified electrician. Follow all national and local codes. SloanLED BrightLINE 2 is not suitable for submersion or direct exposure to water for extended periods of time.

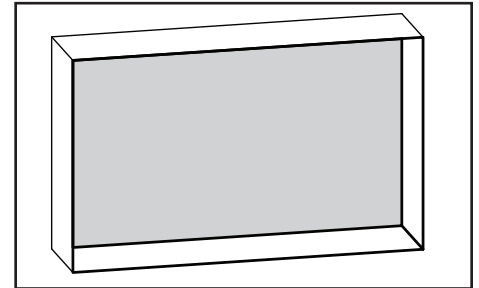
**AVERTISSEMENT:** Risque de choc électrique. Installation exige la connaissance des systèmes électriques de signalisation. Si non qualifié, ne tentez pas l'installation. Contactez un électricien qualifié. Suivez tous les codes national et locaux. SloanLED BrightLINE 2 ne convient pas à la submersion ni à l'exposition directe à l'eau pendant de longues périodes.



**Tools required:** Measuring tape, wire strippers, sheet metal shears/snips (if cutting product), drill, and screwdriver.

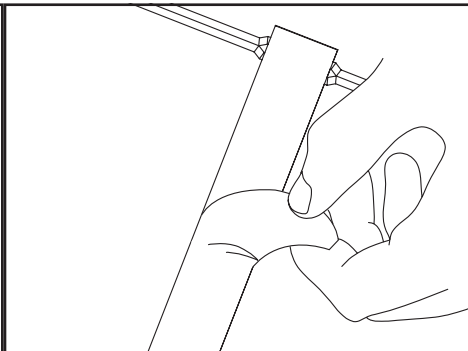
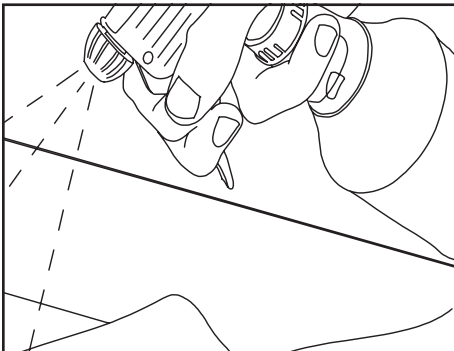


**Layout:** To populate sign, refer to SloanLED BrightLINE 2 density guidelines, test, or contact your SloanLED Representative for recommendations.

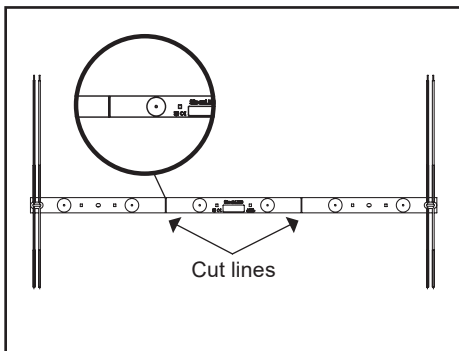


#### Components list:

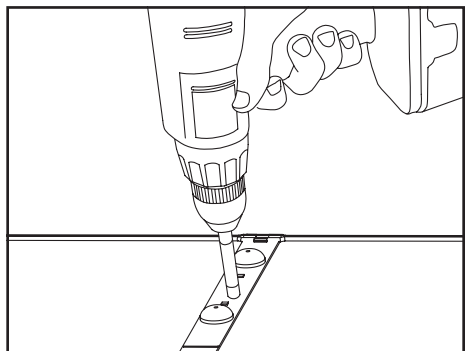
- SloanLED 24 V Class 2 output power supply (refer to "**SloanLED Power Supply Guide for Sign Products**" for appropriate 24 V power supply models)
- UL approved 18 AWG (1 mm<sup>2</sup>), or larger diameter supply wire
- UL/CE approved wire connectors appropriate for wire gauge used
- Optional for mounting: Electrical grade silicone, #6 (M3) pan or hex head sheet metal screws, or 1/8" (3 mm) aluminum rivets



1. **Peel and stick:** Clean inside sign with rubbing alcohol and allow to dry. Using predetermined layout and LED placement from previous step, remove tape backing and stick LED strips into place. Ensure strips are firmly attached.



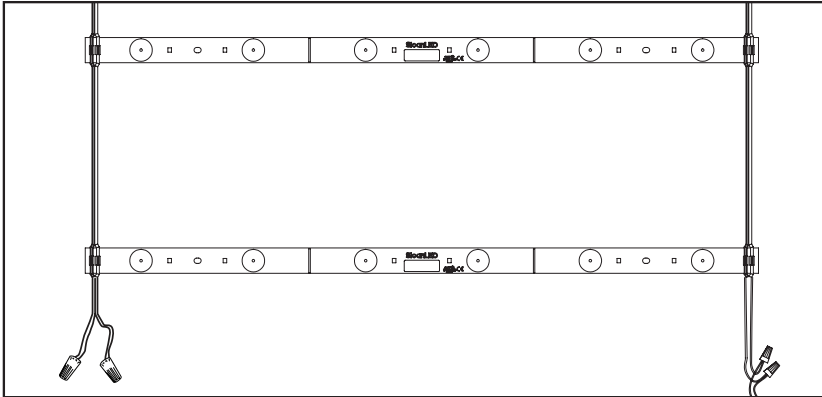
2. **Adjustment of width (Long):** If a narrower width is required, use a pair of sharp sheet metal shears/snips to cut along cut lines. Deburr end of cut product with metal file or sandpaper to prevent electrical shorts.



3. **Fasteners:** Use fasteners or silicone as necessary to fix LED strips into place. Refer to components list above for acceptable fasteners.

# SloanLED BrightLINE 2

Installation Guide for 701989-(X)W24LB(1,2), 701989-(X)W24SB(1,2)



4. **Connections:** LED Strips may be connected in series or parallel, using appropriate UL/CE Listed wire connectors. Cap all unused wires. Connect power supply output to first LED strip on string. See power supply install guide for more information regarding power supply installation.

**NOTE:** SloanLED BrightLINE 2 Long and SloanLED BrightLINE 2 Short may be connected to same power supply output. Ensure total power consumption does not exceed 90% of power supply output rating.

Scan QR code to download SloanLED Power Supply Guide for Sign Products



<https://sloanled.com/PowerSupplyGuideForSignProducts>

## 24 VDC Power Supply Capacity Chart

| Power output           | Maximum feet (meters) / LED strips                           |   |  |   |
|------------------------|--|---|--|---|
|                        | SloanLED BrightLINE 2 Long<br>3.3 W/strip, 6.7 W/ft (22 W/m) | SloanLED BrightLINE 2 Long LP<br>2.0 W/strip, 4.1 W/ft (20.5 W/m) | SloanLED BrightLINE 2 Short<br>1.1 W/strip, 2.2 W/ft (7.4 W/m) | SloanLED BrightLINE 2 Short LP<br>0.7 W/strip, 1.4 W/ft (6.8 W/m) |
| 30 W<br>(EU/ROW ONLY)  | 3.9 ft (1.2 m) / 8 strips                                    | 6.4 ft (2.0 m) / 13 strips  | 11.8 ft (3.6 m) / 24 strips                                    | 19.7 ft (6.0 m) / 40 strips                                       |
| 60 W                   | 7.9 ft (2.4 m) / 16 strips                                   | 12.8 ft (3.9 m) / 26 strips                                       | 24.1 ft (7.4 m) / 49 strips                                    | 38.9 ft (11.9 m) / 79 strips                                      |
| 96 W                   | 13.3 ft (4.1 m) / 27 strips                                  | 21.6 ft (6.6 m) / 44 strips                                       | 39.9 ft (12.2 m) / 81 strips                                   | 64.9 ft (19.8 m) / 132 strips                                     |
| 3 × 96 W               | 3 × 13.3 ft (4.1 m) / 27 strips                              | 3 × 21.6 ft (6.6 m) / 44 strips                                   | 3 × 39.9 ft (12.2 m) / 81 strips                               | 3 × 64.9 ft (19.8 m) / 132 strips                                 |
| 100 W                  | 13.3 ft (4.1 m) / 27 strips                                  | 21.6 ft (6.6 m) / 44 strips                                       | 39.9 ft (12.2 m) / 81 strips                                   | 64.9 ft (19.8 m) / 132 strips                                     |
| 150 W<br>(EU/ROW ONLY) | 20.2 ft (6.2 m) / 41 strips                                  | 32.5 ft (9.9 m) / 66 strips                                       | 60.0 ft (18.3 m) / 122 strips                                  | 97.4 ft (29.7 m) / 198 strips                                     |

Capacities based on 90% of power supply output.

**NOTE:** Refer to "SloanLED Power Supply Guide for Sign Products" for appropriate 24 V power supply models.

## Extension of Power Supply Leads

If longer lead wire from power supply to LED strips is needed, an extension can be used. Extension should be kept as short as possible, i.e., under 15 ft for 18 AWG UL Listed PLTC (4.6 m for 1 mm<sup>2</sup> PLTC) or under 50 ft for 14 AWG UL Listed PLTC (15.2 m for 2.5 mm<sup>2</sup> PLTC).

## Troubleshooting:

|  |  |
|--|--|
| <b>Entire sign or leg does not light after complete installation.</b>                              | Check connection from power supply lead to first LED strip. Make sure polarity of connections made at the power supply lead and any jumper wire is correct. Power supply outputs should be connected RED-TO-RED and BLACK-TO-WHITE.  |
| <b>Still does not light.</b>   | Check output voltage of power supply using a voltmeter. The output voltage should be DC 12.0 V ± 0.5 V or DC 24.0 V ± 0.5 V (24 V product). If there is no output voltage, have a licensed electrician check input voltage. Make sure power supply is connected correctly and getting primary power. If power supply is connected properly and getting primary power and there is still no output voltage, try a different power supply. |
| <b>Still does not light.</b>   | If power supply is getting primary power and LED strips don't light, there may be a short in the secondary wiring. Check all connections and cap all loose wires.  |
| <b>The beginning of a leg lights, but the entire leg does not light, or lights intermittently.</b> | The primary cause of a portion of a SloanLED BrightLINE 2 leg not lighting or lighting intermittently is a bad connection or reverse polarity connection between LED strips that light and LED strips that don't light. Check this connection.   |
| <b>One LED strip does not light, but all others in the leg light.</b>                              | SloanLED BrightLINE 2 is designed so if one LED strip fails, it will not cause the entire sign or leg to go out. If one LED strip does not light, but all others in the leg do, replace this LED strip with a new one.   |



Customer service and technical support

### SloanLED Headquarters

5725 Olivas Park Drive, Ventura, CA, USA  
888.747.4LED (888.747.4533) • info@SloanLED.com

SloanLED.com

### SloanLED Europe b.v.

Argonstraat 110, 2718 SN Zoetermeer, NL  
+31 88 12 44 900 • europe@SloanLED.com

